

CANARY RIVERSIDE



# HANOVER HOUSE



32 Westferry Circus  
Canary Wharf  
London E14

# HANOVER HOUSE

32 Westferry Circus, Canary Wharf, London E14

## 1 Bedroom apartment Type P3

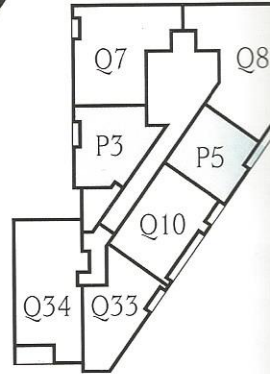
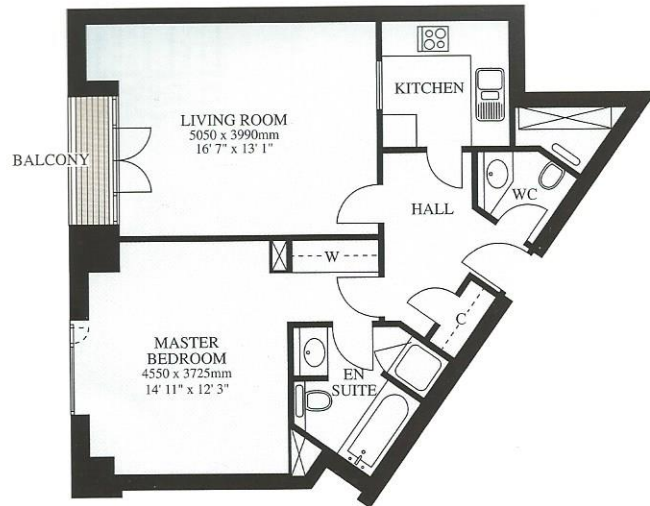
### Availability

Apartment number  
15  
25  
35

Total floor area  
72.4 sq m / 779 sq ft

Level  
1st floor  
2nd floor  
3rd floor

Balcony area  
1.9 sq m / 20 sq ft



Level 1

## 1 Bedroom apartment Type P4

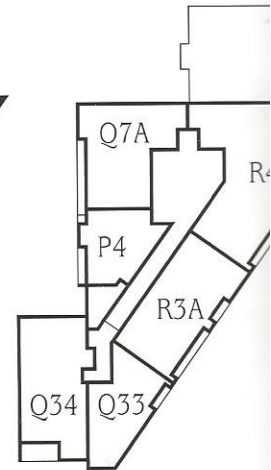
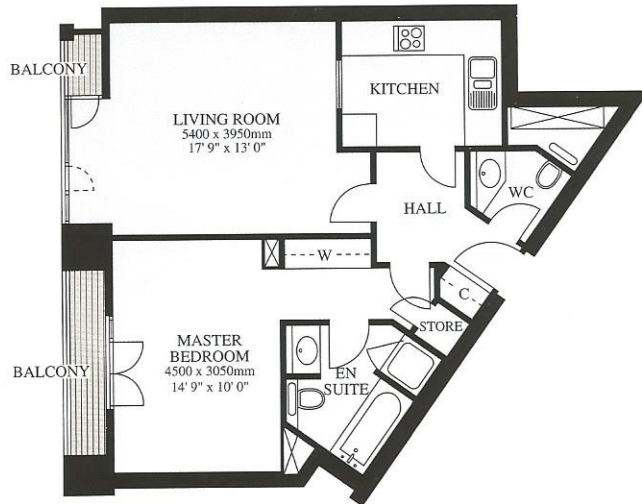
### Availability

Apartment number  
44

Total floor area  
69.8 sq m / 751 sq ft

Level  
4th floor

Balcony area  
4.1 sq m / 44 sq ft



Level 4

## 1 Bedroom apartment Type P5

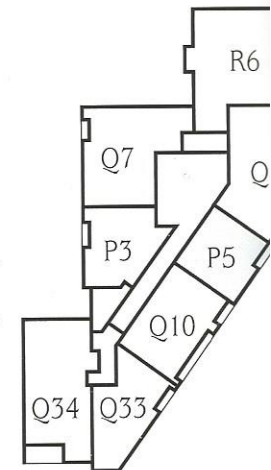
### Availability

Apartment number  
11  
21  
31

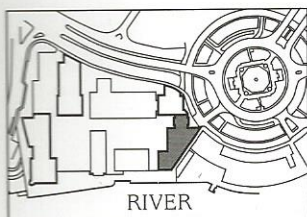
Total floor area  
65.8 sq m / 708 sq ft

Level  
1st floor  
2nd floor  
3rd floor

Balcony area  
2.1 sq m / 23 sq ft



Levels 2 & 3



Plans are not to scale. Areas are measured to centre line of party walls/curtain wall. Room dimensions are taken to face of wall and to the back of wardrobes. Key plans are indicative only.



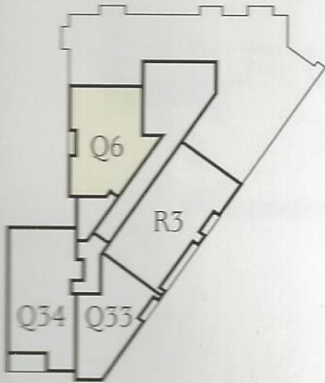
# HANOVER HOUSE

32 Westferry Circus, Canary Wharf, London E14

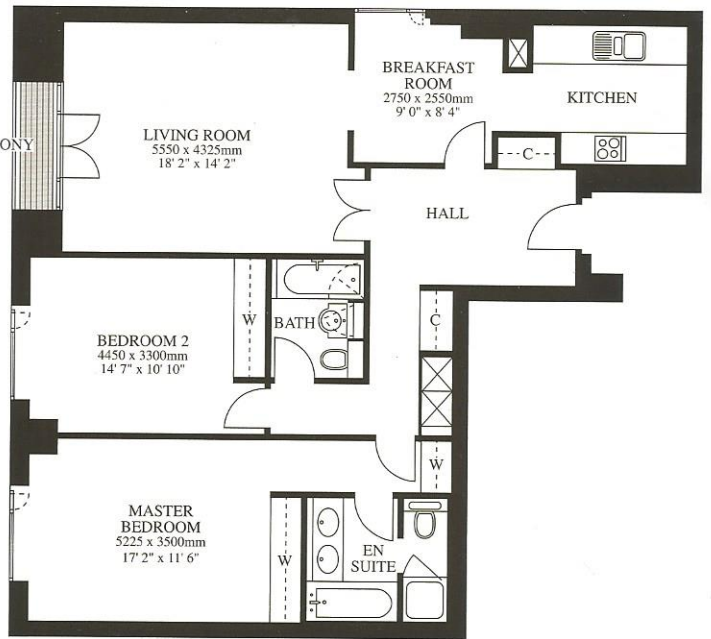
## 2 Bedroom apartment Type Q7

### Availability

Apartment number	Level
16	1st floor
26	2nd floor
36	3rd floor
Total floor area	Balcony area
118.3 sq m / 1,273 sq ft	2.1 sq m / 23 sq ft



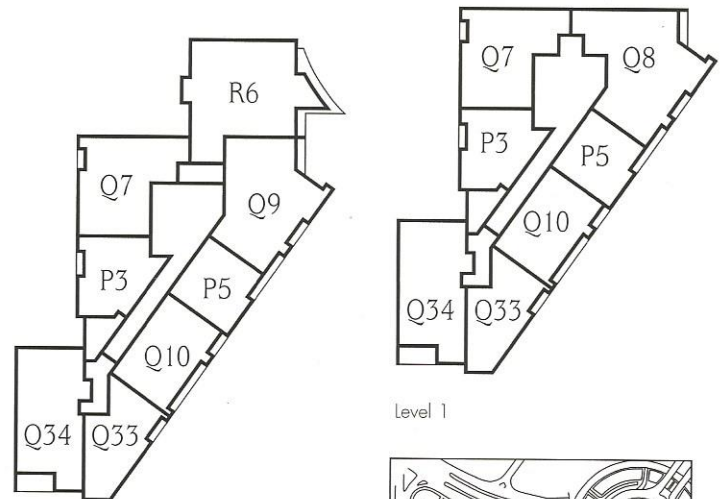
Ground Level



## 2 Bedroom apartment Type Q6

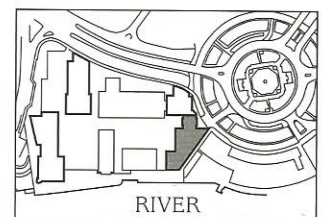
### Availability

Apartment number	Level
Q4	Ground floor
Total floor area	Balcony area
103.4 sq m / 1,113 sq ft	1.9 sq m / 20 sq ft



Levels 2 & 3

Level 1



Plans are not to scale. Areas are measured to centre line of party walls/curtain wall. Room dimensions are taken to face of wall and to the back of wardrobes. Key plans are indicative only.

# HANOVER HOUSE

32 Westferry Circus, Canary Wharf, London E14

## 2 Bedroom apartment Type Q7A

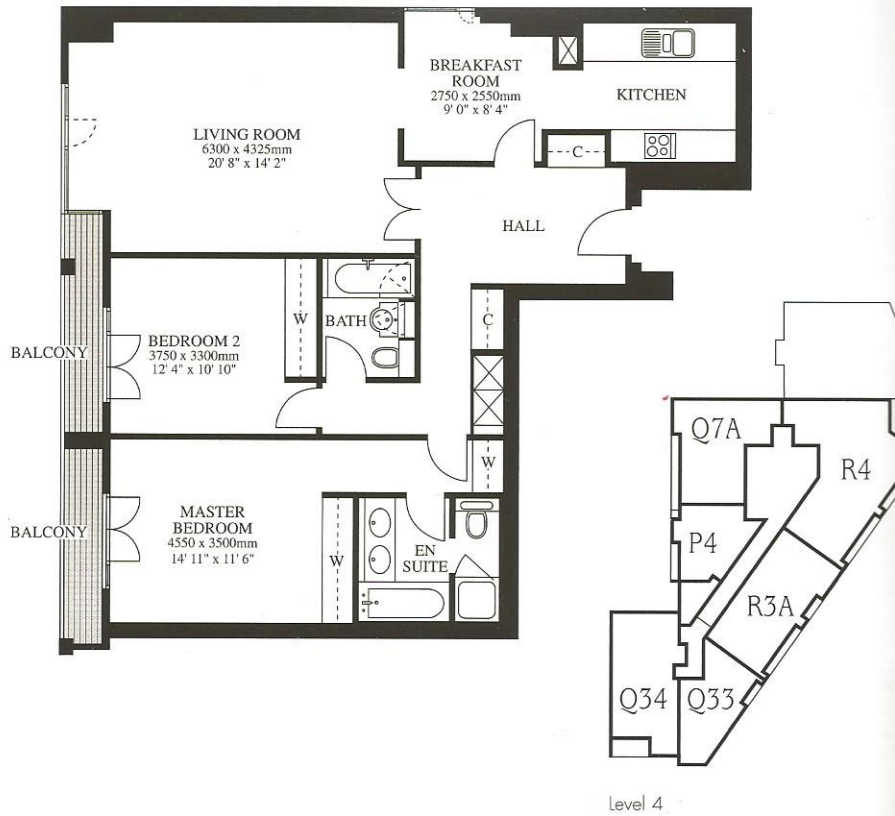
### Availability

Apartment number  
45

Total floor area  
110.1 sq m / 1,185 sq ft

Level  
4th floor

Balcony area  
5.5 sq m / 59 sq ft



## 2 Bedroom apartment Type Q8

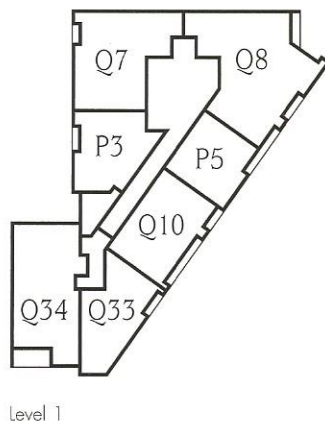
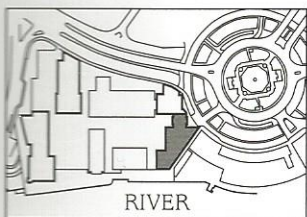
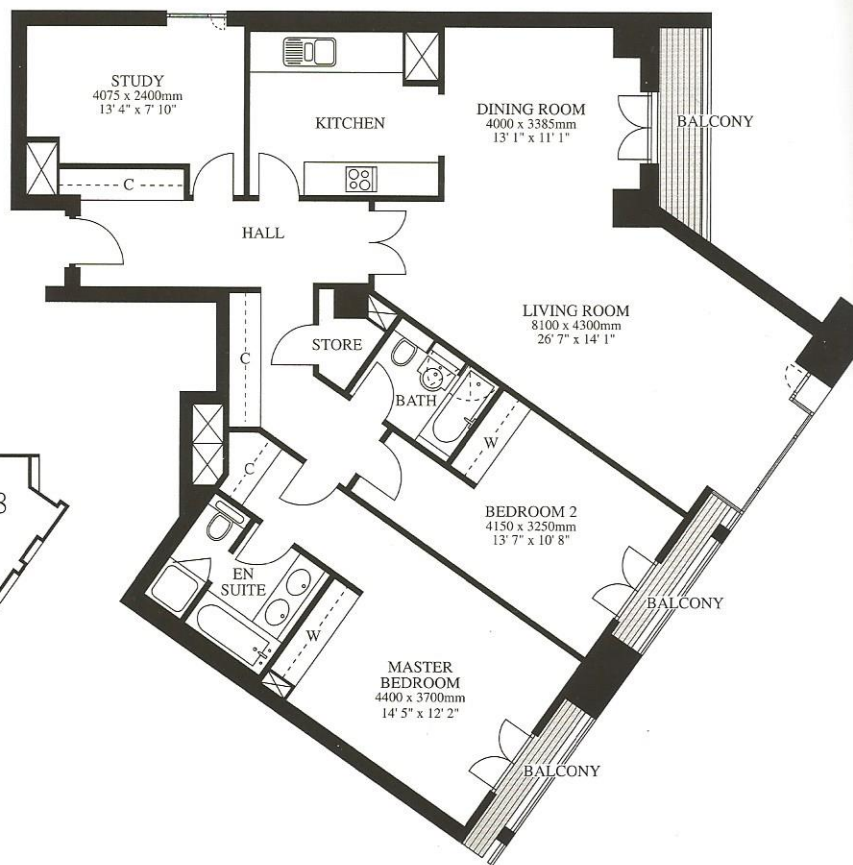
### Availability

Apartment number  
17

Total floor area  
150.8 sq m / 1,623 sq ft

Level  
1st floor

Balcony area  
9.5 sq m / 102 sq ft

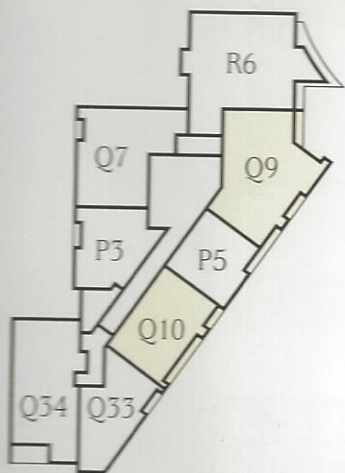


Plans are not to scale. Areas are measured to centre line of party walls/curtain wall. Room dimensions are taken to face of wall and to the back of wardrobes. Key plans are indicative only.



# HANOVER HOUSE

52 Westferry Circus, Canary Wharf, London E14



Levels 2 & 3

## 2 Bedroom apartment Type Q10

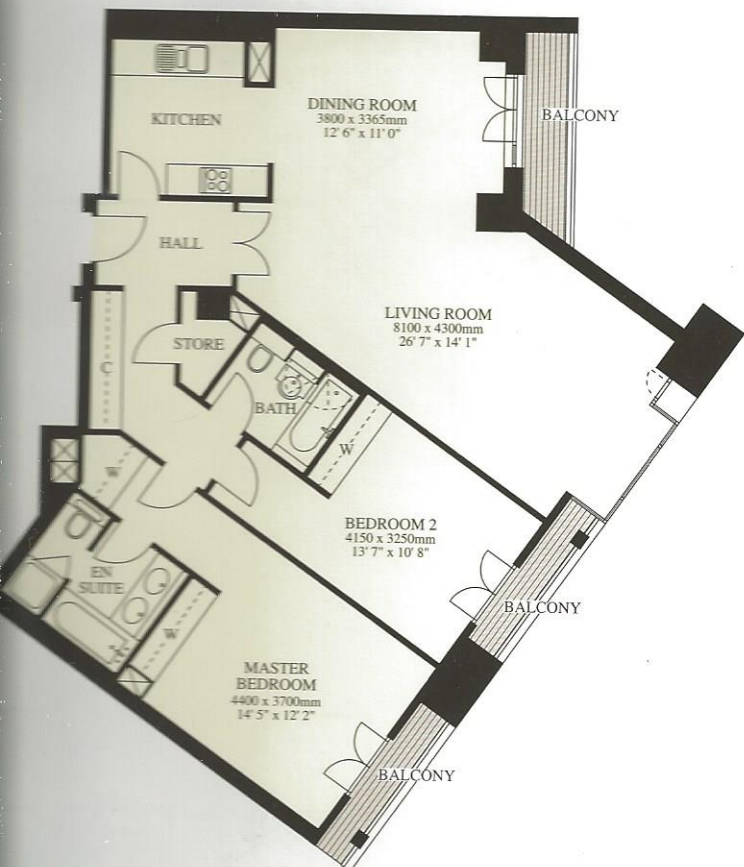
### Availability

Apartment number  
12  
22  
32

Level  
1st floor  
2nd floor  
3rd floor

Total floor area  
92.0 sq m / 990 sq ft

Balcony area  
7.4 sq m / 80 sq ft



## 2 Bedroom apartment Type Q9

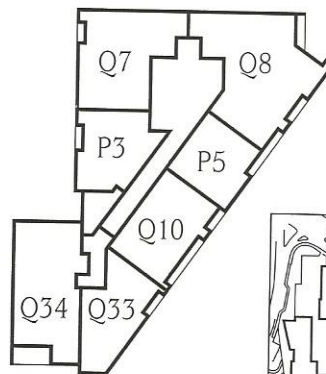
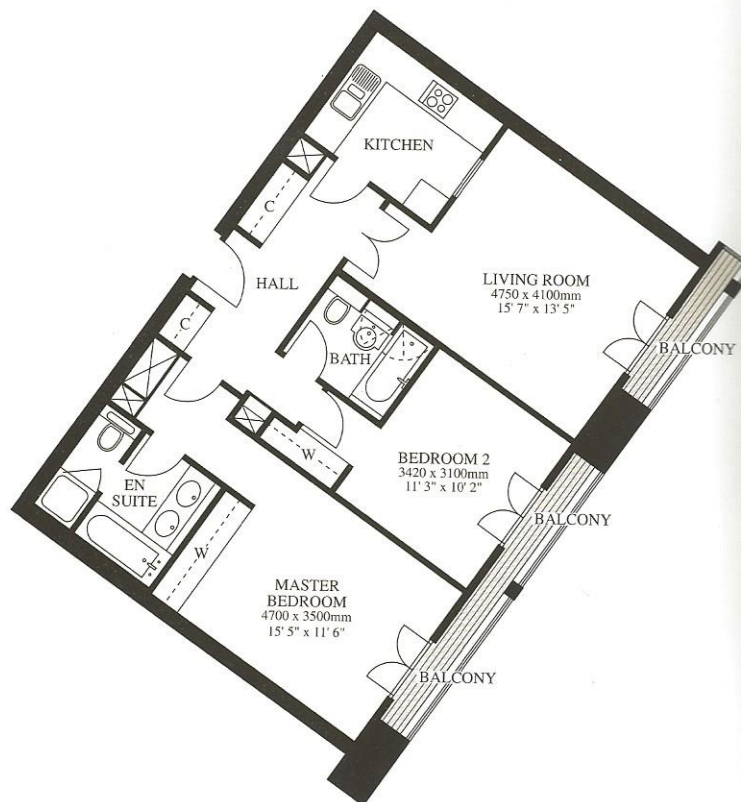
### Availability

Apartment number  
28  
38

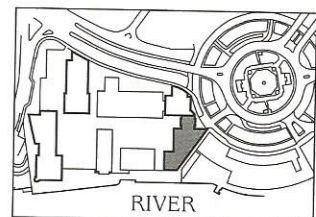
Level  
2nd floor  
3rd floor

Total floor area  
128.8 sq m / 1,386 sq ft

Balcony area  
9.5 sq m / 102 sq ft



Level 1



Plans are not to scale. Areas are measured to centre line of party walls/curtain wall. Room dimensions are taken to face of wall and to the back of wardrobes. Key plans are indicative only.

# HANOVER HOUSE

52 Westferry Circus, Canary Wharf, London E14

## 2 Bedroom apartment Type Q33

### Availability

Apartment number

G2  
13  
23  
33  
42

Level

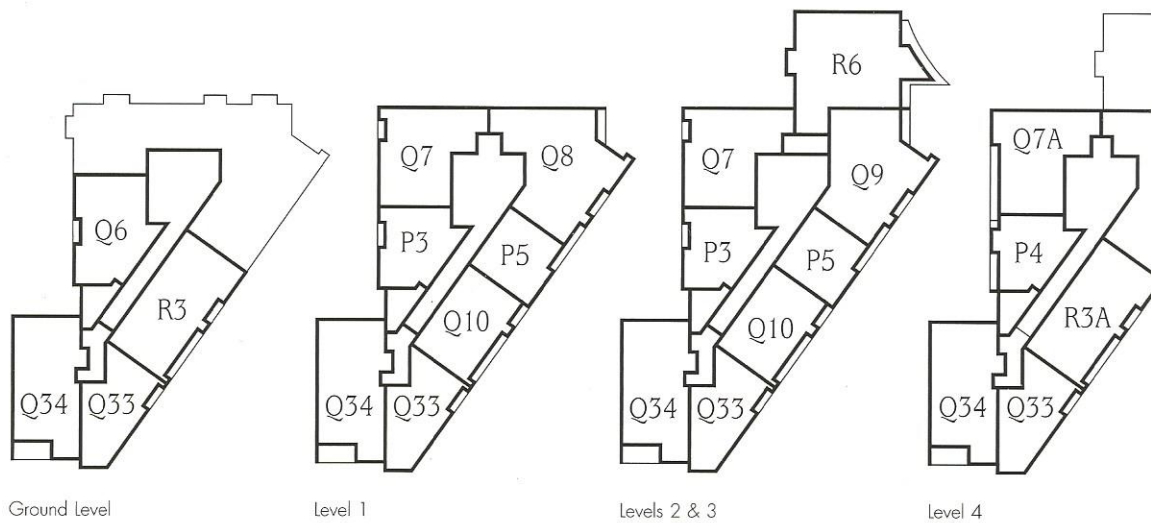
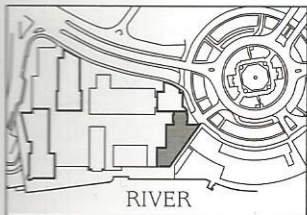
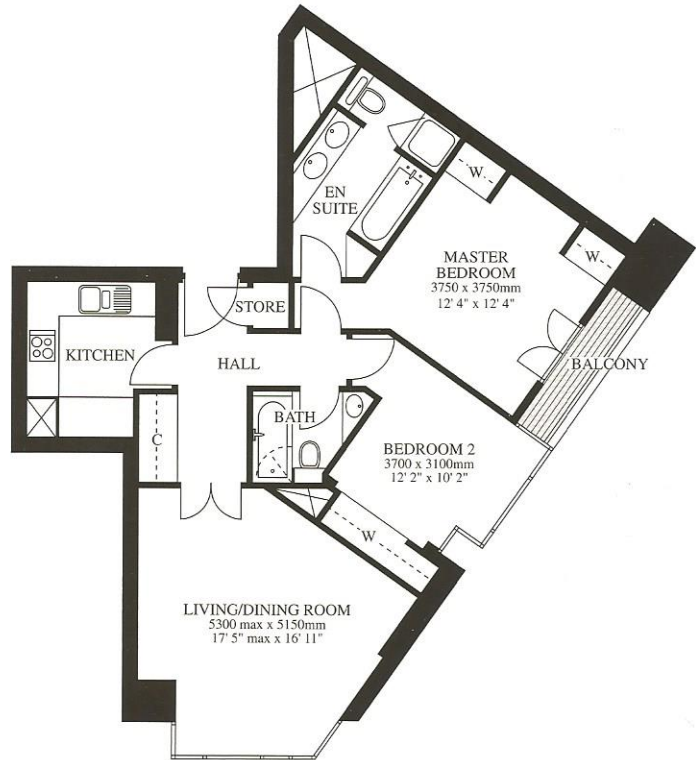
Ground floor  
1st floor  
2nd floor  
3rd floor  
4th floor

Total floor area

88.2 sq m / 949 sq ft

Balcony area

2.8 sq m / 30 sq ft

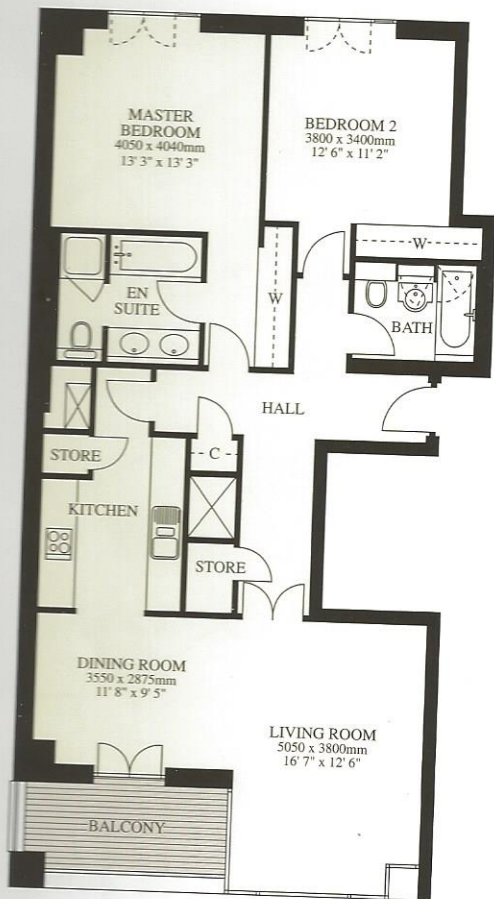


Plans are not to scale. Areas are measured to centre line of party walls/curtain wall. Room dimensions are taken to face of wall and to the back of wardrobes. Key plans are indicative only.

# HANOVER HOUSE

32 Westferry Circus, Canary Wharf, London E14

## 2 Bedroom apartment Type Q34



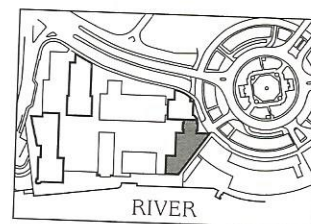
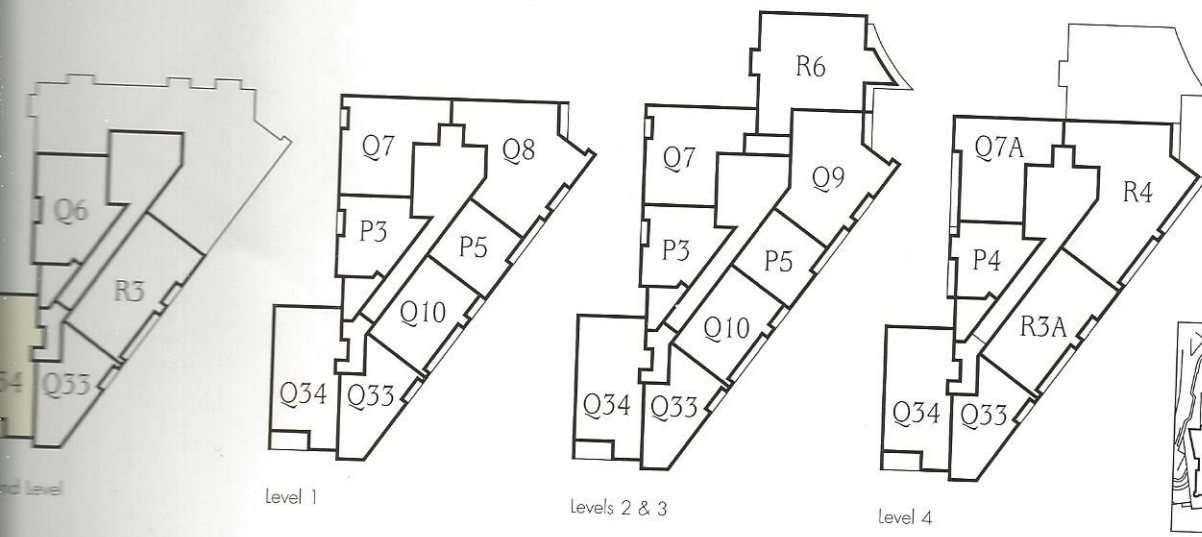
### Availability

Apartment number  
G3  
14  
24  
34  
43

Level  
Ground floor  
1st floor  
2nd floor  
3rd floor  
4th floor

Total floor area  
113.1 sq m / 1,217 sq ft

Balcony area  
7.3 sq m / 79 sq ft



Plans are not to scale. Areas are measured to centre line of party walls/curtain wall. Room dimensions are taken to face of wall and to the back of wardrobes. Key plans are indicative only.



# HANOVER HOUSE

32 Westferry Circus, Canary Wharf, London E14

## 3 Bedroom apartment Type R3/R3A

### Availability

R3 Apartment number  
G1

Level  
Ground floor

Total floor area  
127.2 sq m / 1,369 sq ft

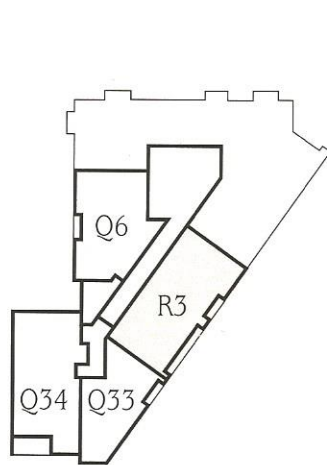
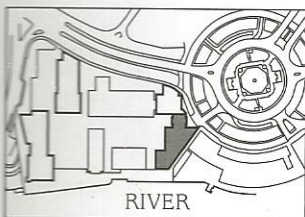
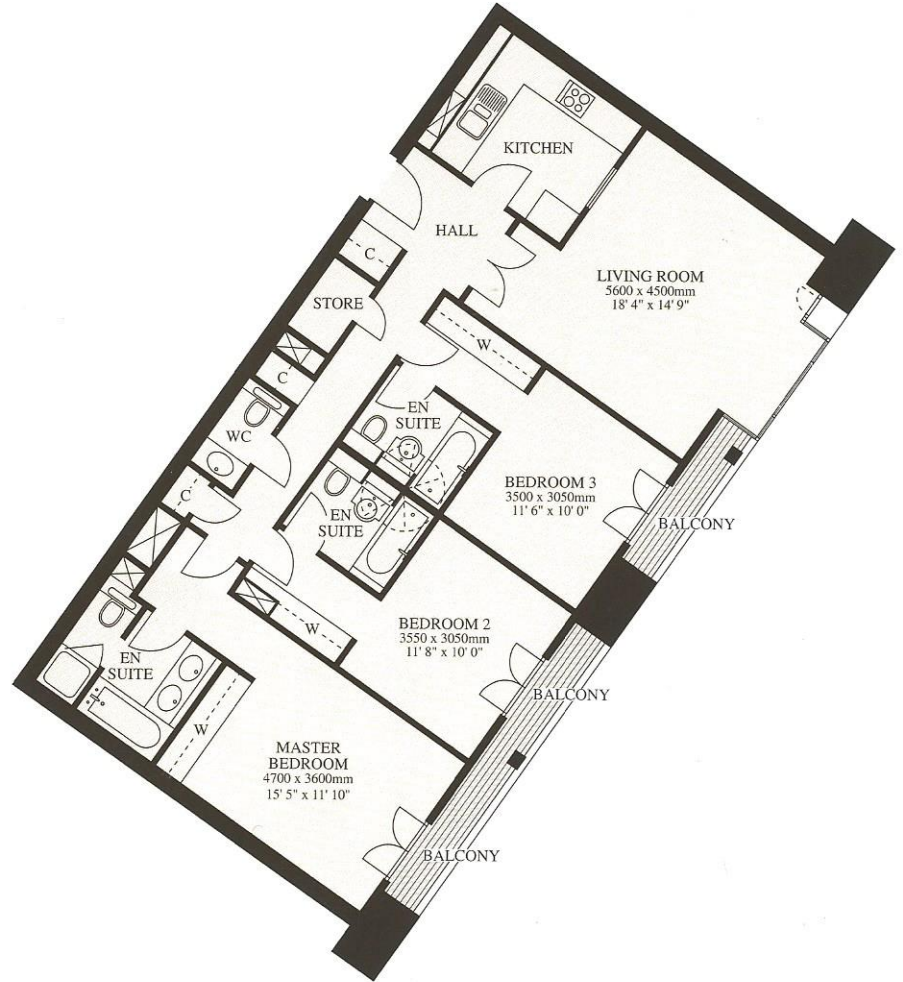
Balcony area  
8.4 sq m / 90 sq ft

R3A Apartment number  
41

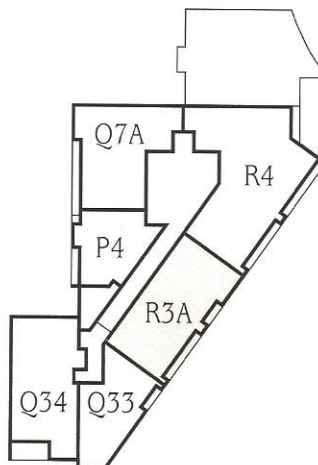
Level  
4th floor

Total floor area  
127.8 sq m / 1,376 sq ft

Balcony area  
8.4 sq m / 90 sq ft



Ground Level



Level 4

Plans are not to scale. Areas are measured to centre line of party walls/curtain wall. Room dimensions are taken to face of wall and to the back of wardrobes. Key plans are indicative only.



# HANOVER HOUSE

52 Westferry Circus, Canary Wharf, London E14

## 3 Bedroom apartment Type R4

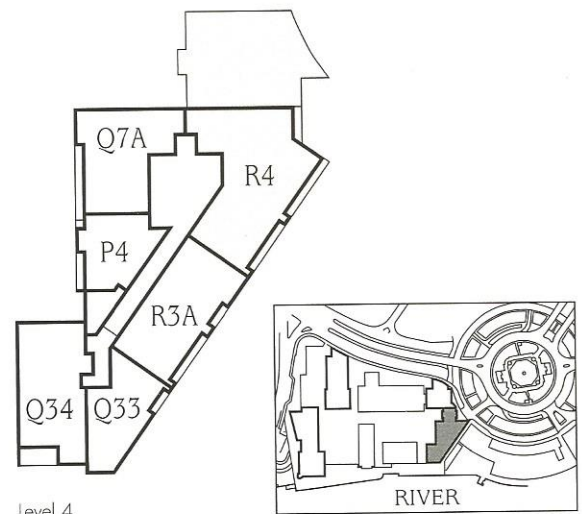
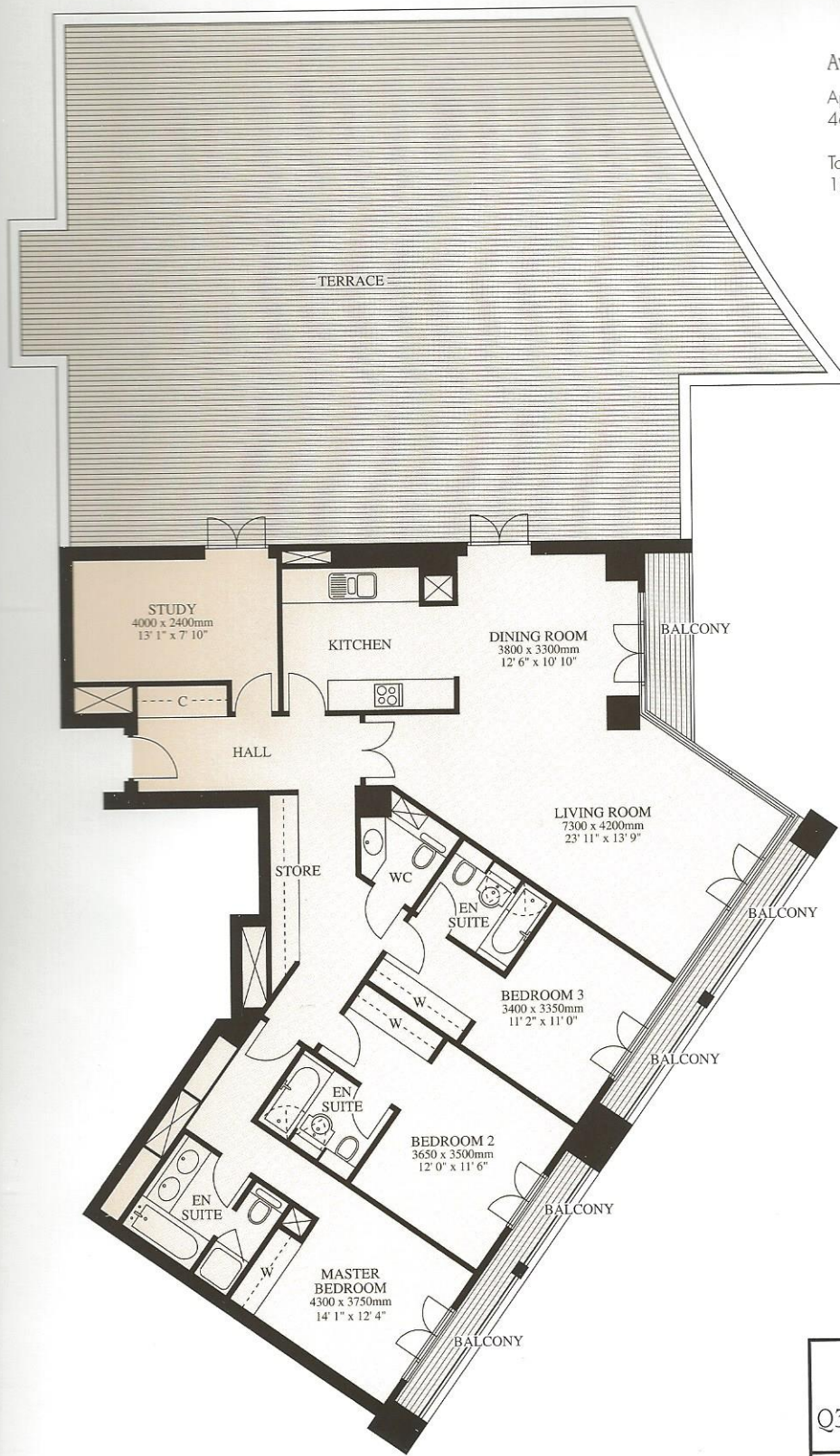
### Availability

Apartment number  
46

Level  
4th floor

Total floor area  
178.6 sq m / 1,923 sq ft

Balcony/Terrace area  
157.5 sq m / 1,695 sq ft



Level 4

Plans are not to scale. Areas are measured to centre line of party walls/curtain wall. Room dimensions are taken to face of wall and to the back of wardrobes. Key plans are indicative only.

# HANOVER HOUSE

32 Westferry Circus, Canary Wharf, London E14

## 3 Bedroom apartment Type R5

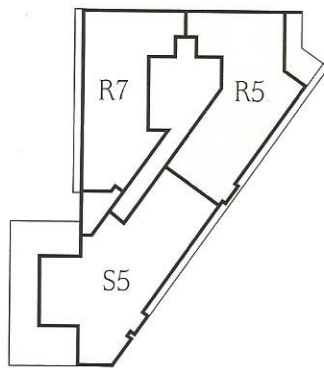
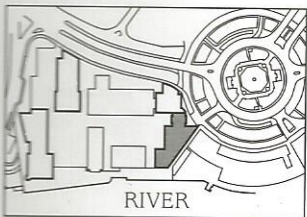
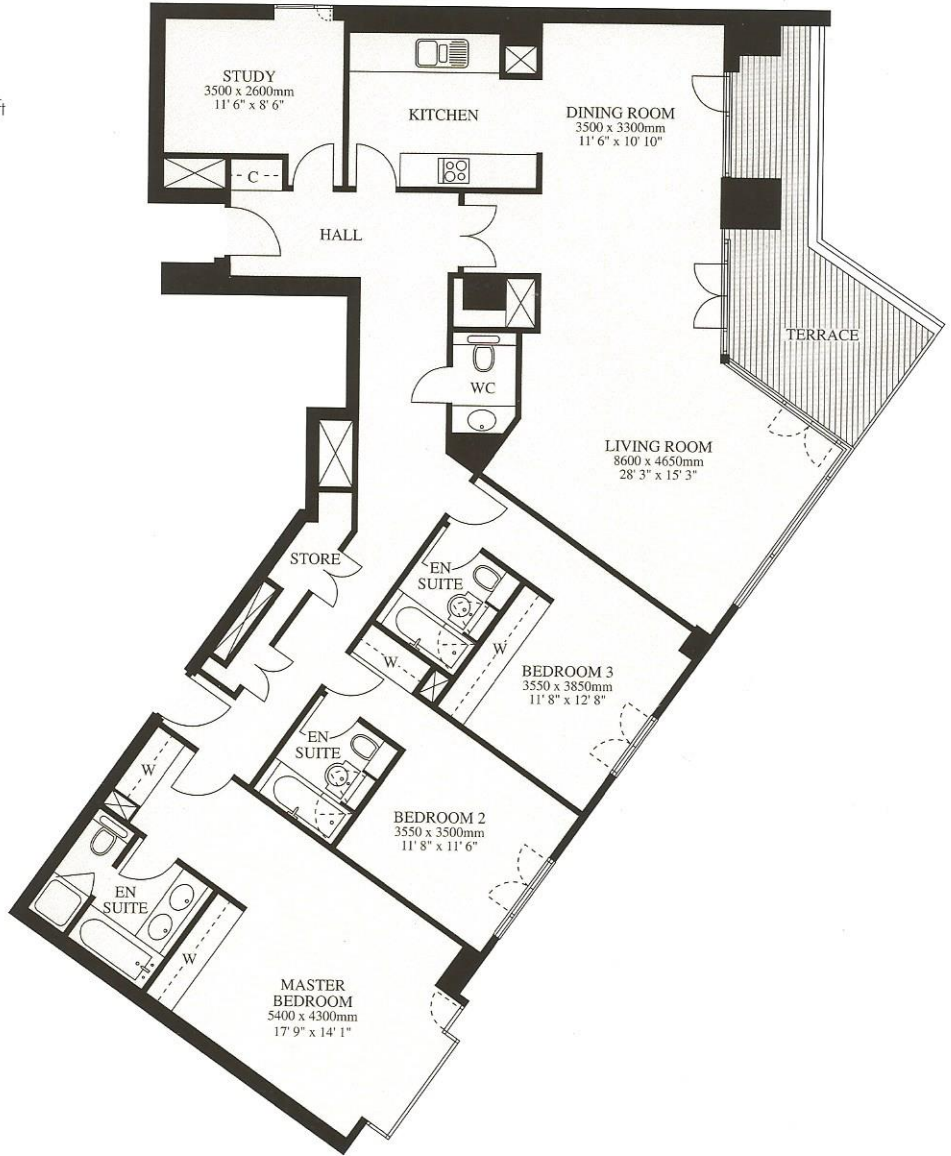
### Availability

Apartment number  
53

Total floor area  
195.5 sq m / 2,104 sq ft

Level  
5th floor

Terrace area  
14.3 sq m / 154 sq ft



Level 5

Plans are not to scale. Areas are measured to centre line of party walls/curtain wall. Room dimensions are taken to face of wall and to the back of wardrobes. Key plans are indicative only.



# HANOVER HOUSE

52 Westferry Circus, Canary Wharf, London E14

## 3 Bedroom apartment Type R6

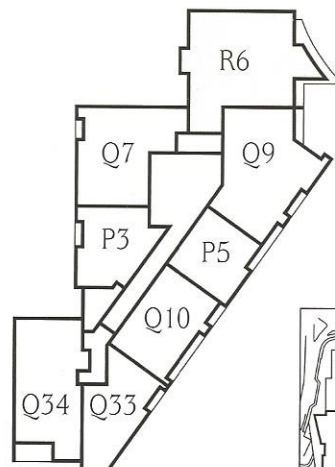
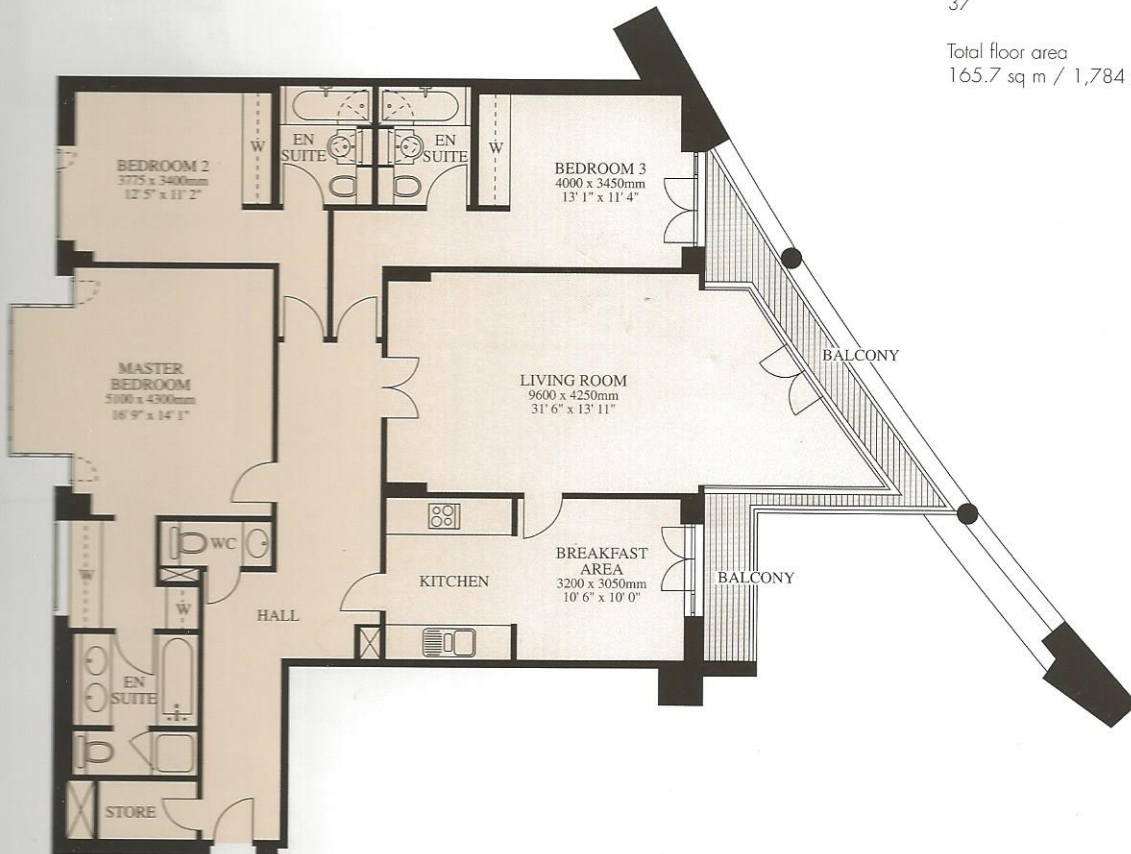
### Availability

Apartment number  
27  
37

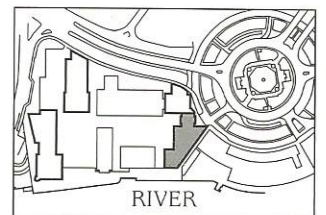
Level  
2nd floor  
3rd floor

Total floor area  
165.7 sq m / 1,784 sq ft

Balcony area  
11.1 sq m / 119 sq ft



Levels 2 & 3



Plans are not to scale. Areas are measured to centre line of party walls/curtain wall. Room dimensions are taken to face of wall and to the back of wardrobes. Key plans are indicative only.

# HANOVER HOUSE

32 Westferry Circus, Canary Wharf, London E14

## 3 Bedroom apartment Type R7

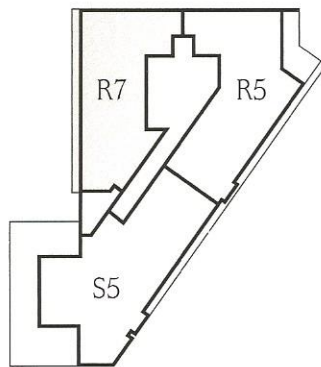
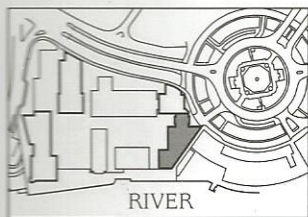
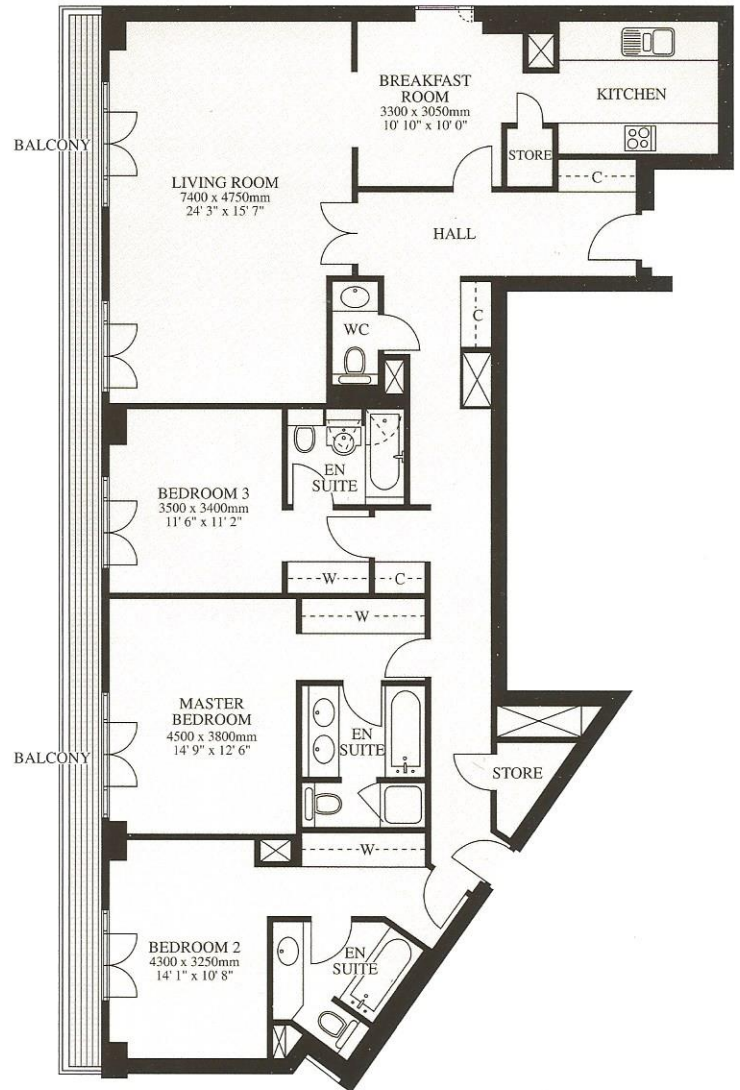
### Availability

Apartment number  
52

Level  
5th floor

Total floor area  
178.7 sq m / 1,924 sq ft

Balcony area  
15.8 sq m / 170 sq ft



Level 5

Plans are not to scale. Areas are measured to centre line of party walls/curtain wall. Room dimensions are taken to face of wall and to the back of wardrobes. Key plans are indicative only.



# HANOVER HOUSE

32 Westferry Circus, Canary Wharf, London E14

## 4 Bedroom apartment Type S5

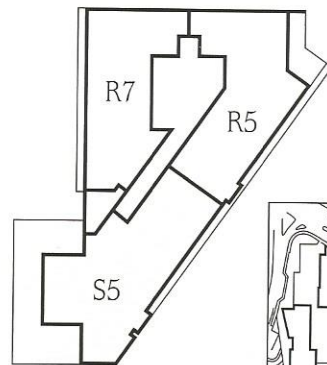
### Availability

Apartment number  
51

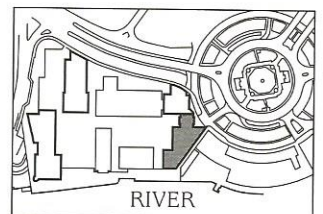
Level  
5th floor

Total floor area  
230.5 sq m / 2,481 sq ft

Terrace area  
92.0 sq m / 990 sq ft



Level 5



Plans are not to scale. Areas are measured to centre line of party walls/curtain wall. Room dimensions are taken to face of wall and to the back of wardrobes. Key plans are indicative only.

# HANOVER HOUSE

52 Westferry Circus, Canary Wharf, London E14

## Typical Furniture Layout

### 1 Bedroom apartment Type P5

#### Availability

Apartment number

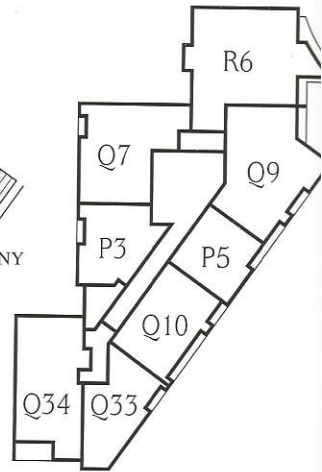
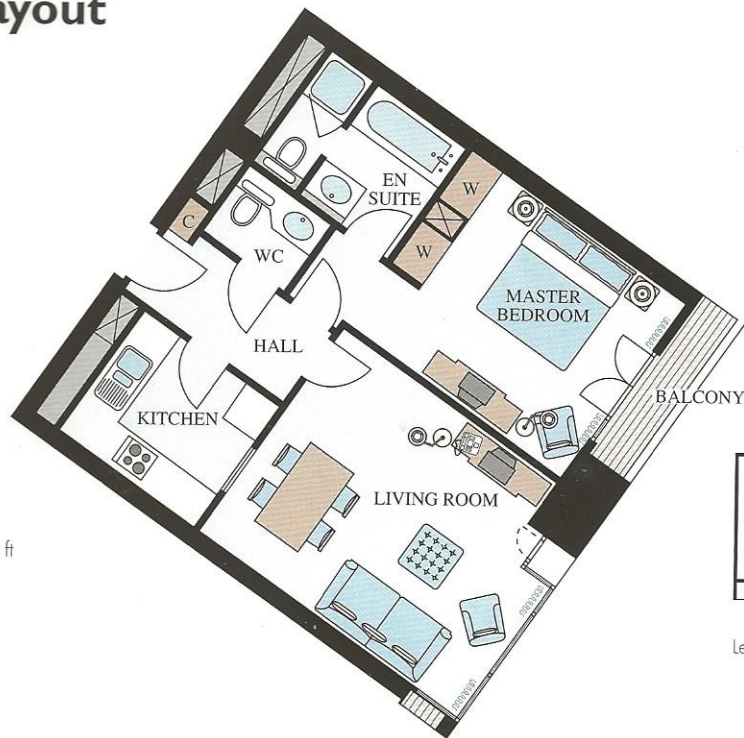
11  
21  
31

Total floor area  
65.8 sq m / 708 sq ft

Level

1st floor  
2nd floor  
3rd floor

Balcony area  
2.1 sq m / 23 sq ft



Levels 2 & 3

### 2 Bedroom apartment Type Q10

#### Availability

Apartment number

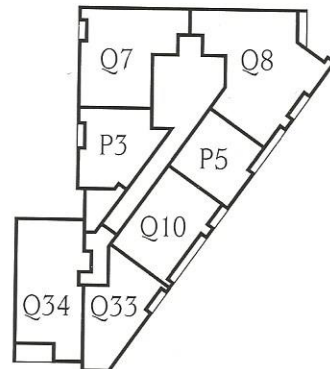
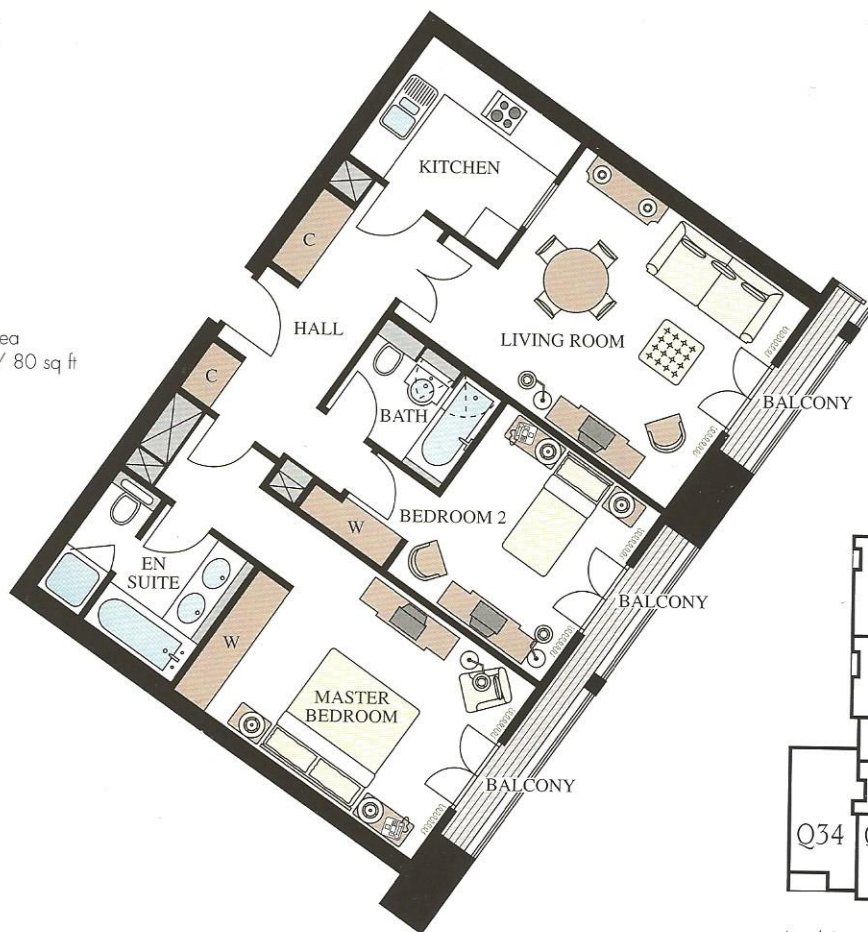
12  
22  
32

Total floor area  
92.0 sq m / 990 sq ft

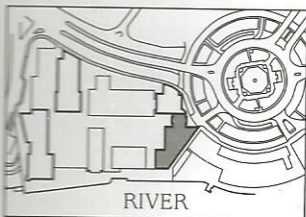
Level

1st floor  
2nd floor  
3rd floor

Balcony area  
7.4 sq m / 80 sq ft



Level 1



RIVER

Plans are not to scale. Areas are measured to centre line of party walls/curtain wall. Room dimensions are taken to face of wall and to the back of wardrobes. Key plans are indicative only.



# HANOVER HOUSE

52 Westferry Circus, Canary Wharf, London E14

## Typical Furniture Layout

## 2 Bedroom apartment Type Q33

### Availability

Apartment number  
G2  
13  
23  
33  
42

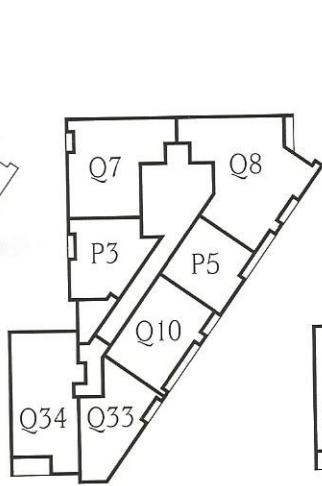
Level  
Ground floor  
1st floor  
2nd floor  
3rd floor  
4th floor

Total floor area  
88.2 sq m / 949 sq ft

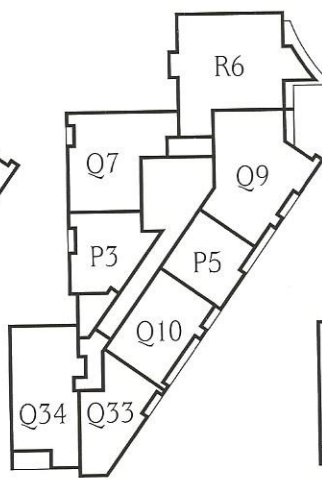
Balcony area  
2.8 sq m / 30 sq ft



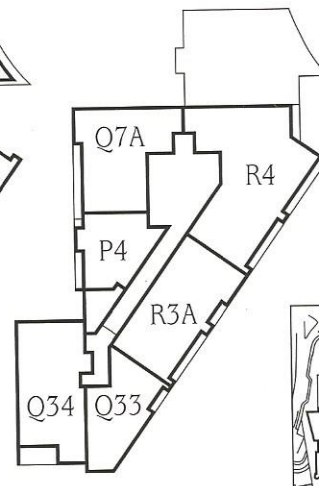
Ground Level



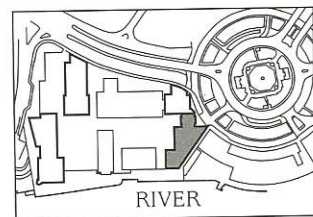
Level 1



Levels 2 & 3



Level 4



Plans are not to scale. Areas are measured to centre line of party walls/curtain wall. Room dimensions are taken to face of wall and to the back of wardrobes. Key plans are indicative only.

## CANARY RIVERSIDE



*More than just Apartments*

For further details, please call the Canary Riverside Marketing Suite in London on  
Tel: +44 (020) 7512 9393 Fax: +44 (020) 7515 9373

Email: [enq@canaryriverside.co.uk](mailto:enq@canaryriverside.co.uk) Website: [www.canaryriverside.co.uk](http://www.canaryriverside.co.uk)

For further details in Singapore, please contact Pidemco Land Limited,  
168 Robinson Road, #30-01 Capital Tower, Singapore 068912  
Tel: (65) 8233 200 Fax: (65) 8233 202

### MISREPRESENTATION ACT 1967

Canary Riverside Development Pte. Limited for themselves give notice that: 1. Whilst every care is taken to ensure accuracy these particulars do not constitute, nor constitute part of, any offer or contract and the right to change plans, specifications and materials is reserved. Due to continuous product development individual features may vary. No responsibility is taken for any other error, omission, or mis-statement in these particulars. 2. All statements contained in these particulars as to this property are made without responsibility on the part of Canary Riverside Development Pte. Limited. 3. Purchasers should not rely on them as statements or representations of fact and must satisfy themselves by investigation or otherwise as to correctness of each of them. 4. No person in the employment of Canary Riverside Development Pte. Limited or any other related company has any authority to make or give any representation of warranty whatever in relation to this property. 5. Illustrations are indicative only allowing sufficient time for planting to grow. 6. The names in this brochure are for marketing purposes only and may not be adopted as a postal address. March 1998.